

# 7 PHASING

PHASE I  
PHASE II  
PHASE III

FIGURES 7.1-3  
*Views of the Phase I Development Plan.*

FIGURE 7.4(OPPOSITE)  
*Plan view of Phase I*

## PHASE I

The full realization of the development plan is anticipated to require twenty-five years or more. The development plan provides a general framework of development blocks, open space, landscape and circulation for the growth of the campus. The development plan provides general guidance for the implementation of the plan at three thresholds of growth: Phase I Initial Building; Phase II 4000 Head Count Students; and Phase III Full Build Out.

Phase I consists of the first academic building and the first residential building. The first building should be approximately 85,000 GSF and should provide flexible mixed use space incorporating all of the functions that will be required to establish a campus including classrooms, labs, research space, offices, a library and support space. Phase I should also include site development including the parking necessary to support the academic and residential facilities. The Texas State Legislature as already funded this first academic building. Receipt of funding is contingent upon the campus reaching the target student enrollment of 1500 Full Time Equivalent Students.

The Phase I academic building is intended to serve as one of the gateway buildings to the campus framing the beginning of the campus' main north south axis at the termination of University Boulevard into the East-West arterial.



Figure 7.1



Figure 7.2



Figure 7.3

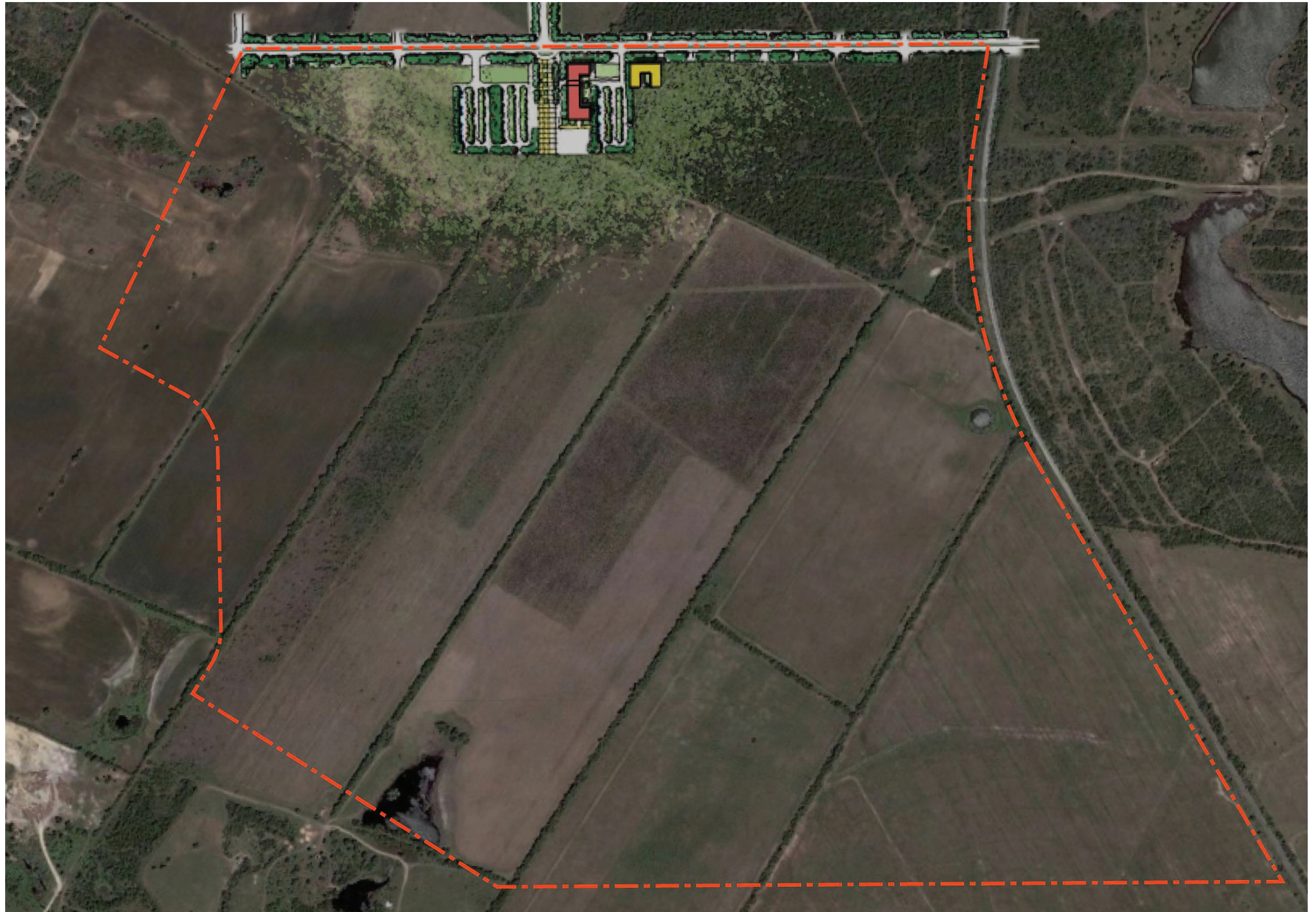


Figure 7.4